

Feature Sheet

Residential Water Heaters | ProtectionPlus



The new degree of comfort.™

ProtectionPlus™ is a 4-year warranty extension kit to be used for new Rheem water heater installations

Warranty Extension

- 6-Year limited tank warranty becomes 10-year
- 8-Year limited tank warranty becomes 12-year
- For use on all Rheem residential models except Manufactured Housing, Marathon, Point-of-Use, Hybrid Heat Pump, Table Top, Condensing Power Direct Vent, Tankless or Thermal Expansion Tanks

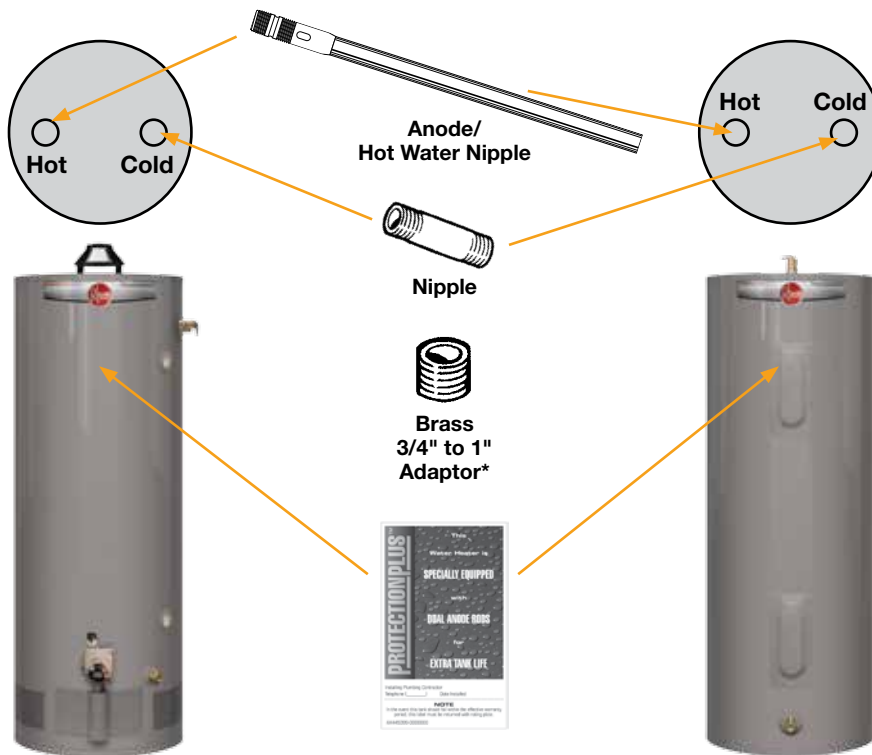
The Kit Contains

- High quality magnesium anode rod with plastic lined nipple (hot side)
- Plastic lined nipple (cold side)
- Brass 3/4" to 1" adaptor*
- Warranty certificate with instructions
- ProtectionPlus™ label to be placed on water heater

Advantages

- Provides up to 135% additional anodic protection
- With just two water heaters, you have the option of selling four warranty periods
- Effectively have four water heaters in little more space than two

Installation Instructions



ProtectionPlus 4-Year Limited Warranty Extension Kit

Part Number: SP20079
(sold only in 6 package quantity)

1. Remove any factory installed water connections (nipples) from the hot water outlet.
Please note that some water heaters are equipped with an internal heat trap in the hot water outlet which must be removed prior to installing the combination anode/hot water nipple.
2. Install the combination anode/hot water nipple into the hot water outlet coupling of the water heater.
3. Install the cold water nipple (3") into the cold water inlet coupling of the water heater.
4. Place ProtectionPlus™ label next to warning label on the front of the water heater.
(The bottom portion of this label will be used to validate warranty in the event of tank failure.)
DO NOT place over any of the existing labels.
5. Follow all installation instructions as outlined in water heater's "Use and Care Manual".
6. Replace factory provided "Certificate of Limited Warranty" with this ProtectionPlus™ "Certificate of Limited Warranty".

*Some models require a 3/4" to 1" adaptor.

In keeping with its policy of continuous progress and product improvement, Rheem reserves the right to make changes without notice.

Rheem Water Heating • 101 Bell Road
Montgomery, Alabama 36117-4305 • 1.800.621.5622



INTEGRATED AIR & WATER

Rheem.com

PRINTED IN U.S.A. 11/15 WP FORM NO. 101-7Color Rev. 9